

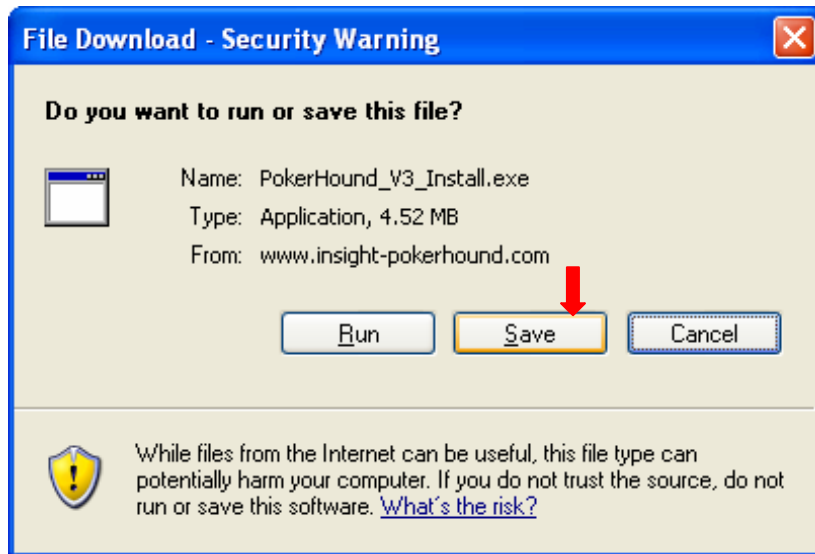
# PokerHound Installation and Setup Instructions

## Supported Operating Systems

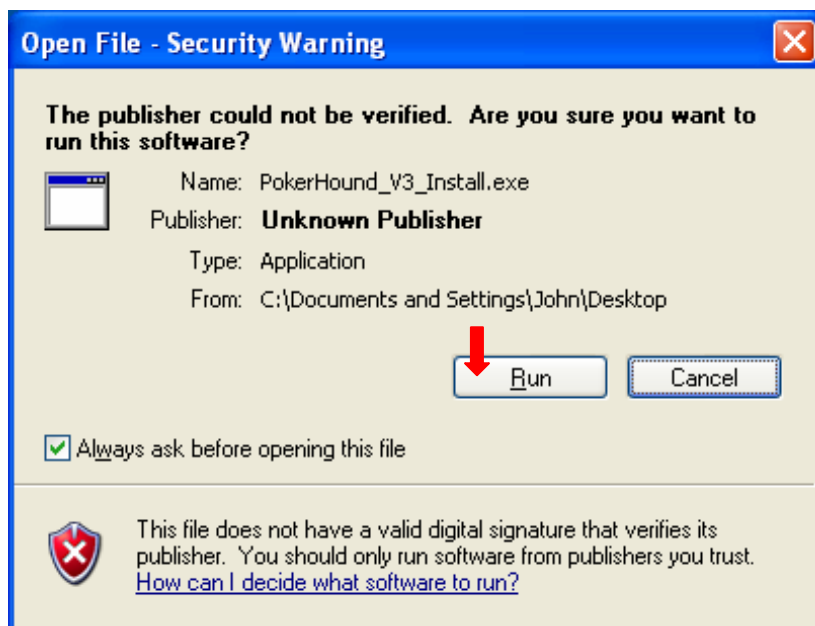
1. Windows XP with Service Pack 2 or higher
2. Windows 2000 with Service Pack 4 or higher
3. Windows Vista (Not available until May 2007)

## Installation Process

1. Choose Save option for download



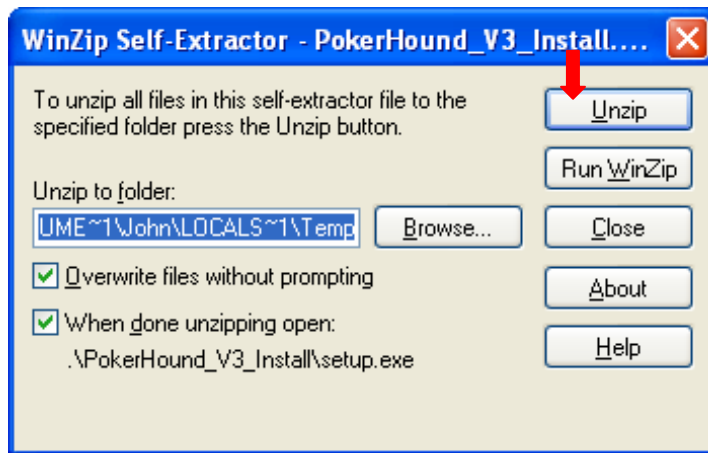
2. After file downloads, double click on PokerHound\_V3\_Install.exe and click Run.



3. Click OK.



4. Click Unzip.

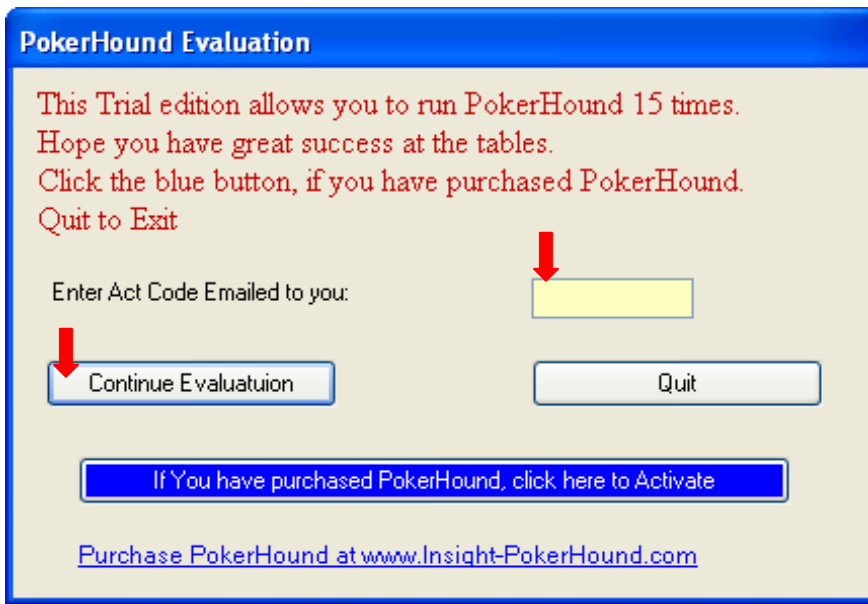


Initial Install will download and install the following components from Microsoft, if they are not already installed on your system:

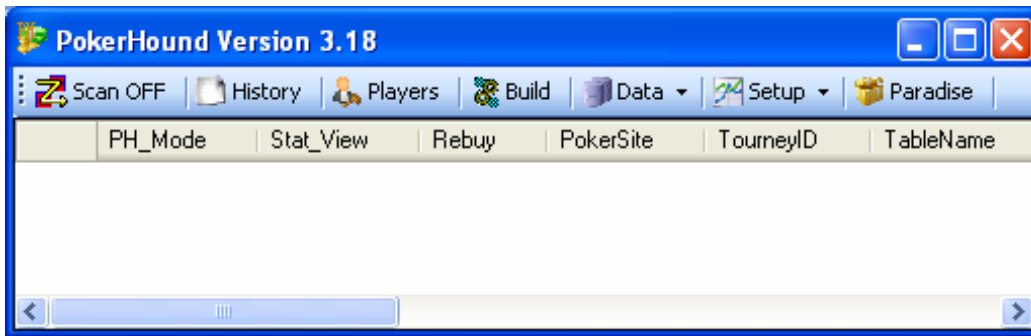
1. MSI 3.1 <http://support.microsoft.com/kb/893803>
2. Net Framework 2  
<http://www.microsoft.com/downloads/details.aspx?familyid=0856eacb-4362-4b0d-8edd-aab15c5e04f5&displaylang=en>
3. SQL Express database engine <http://msdn.microsoft.com/vstudio/express/sql>

If your system blocks the microsoft download, the installer will generate a message stating that it was unable to install the component. If that occurs, manually download and install the component from microsoft using the URL's listed above. Then reboot your computer and re-launch the PokerHound installer.

Start PokerHound and enter your Act Code then click Continue



PokerHound Main form will then enable



See Active demo at <http://www.insight-pokerhound.com> for explanation of each control

## Set PokerHound Options

1. From PokerHound main form, click Setup → Options
  - a. Set your Windows Version
  - b. Enter your screen names exactly as they appear in the Poker Site chat box
  - c. Set the Poker Site themes
  - d. Set Table Stats view to Stack Left

The screenshot shows the 'Options' dialog box with several sections and settings. Red arrows point to the following elements:

- Windows Version:** A dropdown menu set to 'XP'.
- Screen Names:** A text input field for 'Paradise'.
- Poker Site Themes:** Two dropdown menus, one for 'Full Tilt' set to 'Classic' and one for 'Poker Stars' set to 'No Images'.
- Program Control:** A dropdown menu for 'Table Stats View on Start Scan' set to 'Stack Left'.

Other visible settings include:

- Full Tilt:** Text input field containing 'PH\_Master'.
- Poker Stars:** Text input field containing 'PH\_Master'.
- Score and Style:**
  - Min. Hands to Auto-Calc Score: 15
  - Auto-Calc Frequency: 10
  - Min. Post Flop Actions to Segregate Aggr. Factor: 25
- Data Control:**
  - Delete on close players with less than x hands: 5
  - Limit History View to Games in last x days: 90
- Player Stat. Sort:**
  - Sort Pocket Analysis on Action then Position:
  - Sort Flop, Turn, River Analysis on Action then Position:
- Program Control (checkboxes):**
  - Show PotOdds Strategy on Start Scan:
  - Show PushFold Strategy on Start Scan:
  - Always Open External Stat in Style Tab:
  - Auto Switch SitAndGo to Short Game Stats:
  - Auto Switch MTT to Short Game Stats:
- Minimum Actuals to exclude pattern data:** 5
- Minimum Acceptable Pattern Sample Size:** 5
- Minimum # Hands for Player Hand Strength calculation:** 20
- Min # Players with score to build game Pattern:** 100

Buttons at the bottom: Save, Cancel.

## Set Poker Site Options

Full Tilt:



Poker Stars:



### Setup Integrated Stat Position

If you do not setup the integrated stats, the default positioning will be used.

For help on setting up the integrated stats, see video demo:

**New** Demo #3: Setup of Integrated Stats in Version 3 at

<http://www.insight-pokerhound.com/Demos.htm>

### Review other Video demos to ensure smooth operation

**New** Demo #1: How To Scan Tables on Full Tilt

**New** Demo #2: How To Scan Tables on Poker Stars

**New** Demo #4: Use of Categories in Version 3

**New** Demo #5: History View – Operation, Trending, and Analysis