

# PokerHound Installation and Setup Instructions for Windows Vista

## Supported Operating Systems

1. Windows XP with Service Pack 2 or higher
2. Windows 2000 with Service Pack 4 or higher
3. Windows Vista (Note: PokerHound currently supports Vista-32)

**Note:** Almost all new systems currently come equipped with Vista 32 bit. PokerHound is 100% compatible with Vista-32, but will not be fully compatible with Vista-64 bit until late 2008.

## Process Steps

For a walk through of install process see demo:

[http://www.insight-pokerhound.com/Install\\_PokerHound\\_On\\_Vista.html](http://www.insight-pokerhound.com/Install_PokerHound_On_Vista.html)

1. Download and Save PokerHound Installer
  - a. <http://www.insight-pokerhound.com/download.htm>
  - b. Enter your email and click Submit
  - c. Click on Installer link from download page that you will be directed to after clicking Submit.
2. Install PokerHound simply by following the directions at each stage of the install. On initial install, the installer will automatically download, install, and configure SQL Express before installing PokerHound. If you have an old version of SQL Express on your system you should first uninstall it. See demo: [http://www.insight-pokerhound.com/How\\_To\\_Uninstall\\_SQL\\_Express.html](http://www.insight-pokerhound.com/How_To_Uninstall_SQL_Express.html)
3. If you play at Party Poker, install FPHG and set it to run in XP emulation.
4. Set PokerHound to run as an Administrator. If PokerHound is not run as Administrator, Vista will block hook into Poker Site chat text for real-time action. See demo: [http://www.insight-pokerhound.com/How\\_To\\_Run\\_As\\_Admin.html](http://www.insight-pokerhound.com/How_To_Run_As_Admin.html)
5. Setup PokerHound Options
6. Setup Poker Site Options

## Install PokerHound

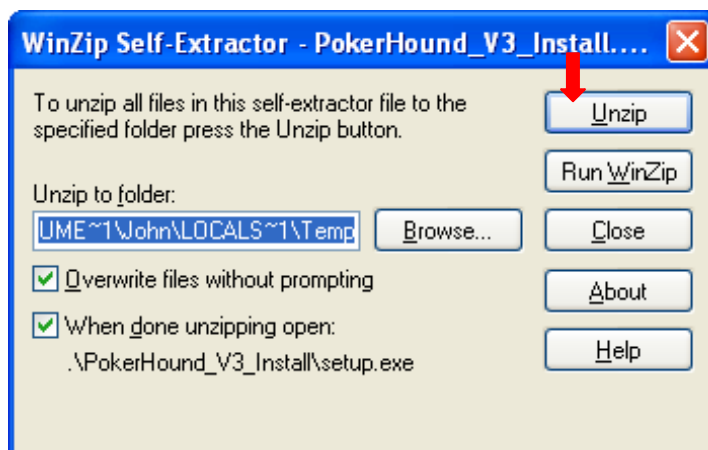
1. Double click on PokerHound\_V3\_Install.exe and click Run.



2. Click OK.



3. Click Unzip.



## Install FPHG (Free Party Hand Grabber) Version 2.09

If you do not play at Party Poker, this step can be omitted.

FPHG is a free open source utility that builds dynamic Hand Histories for Party Poker. PokerHound uses the output of FPHG for the Party Poker interface.

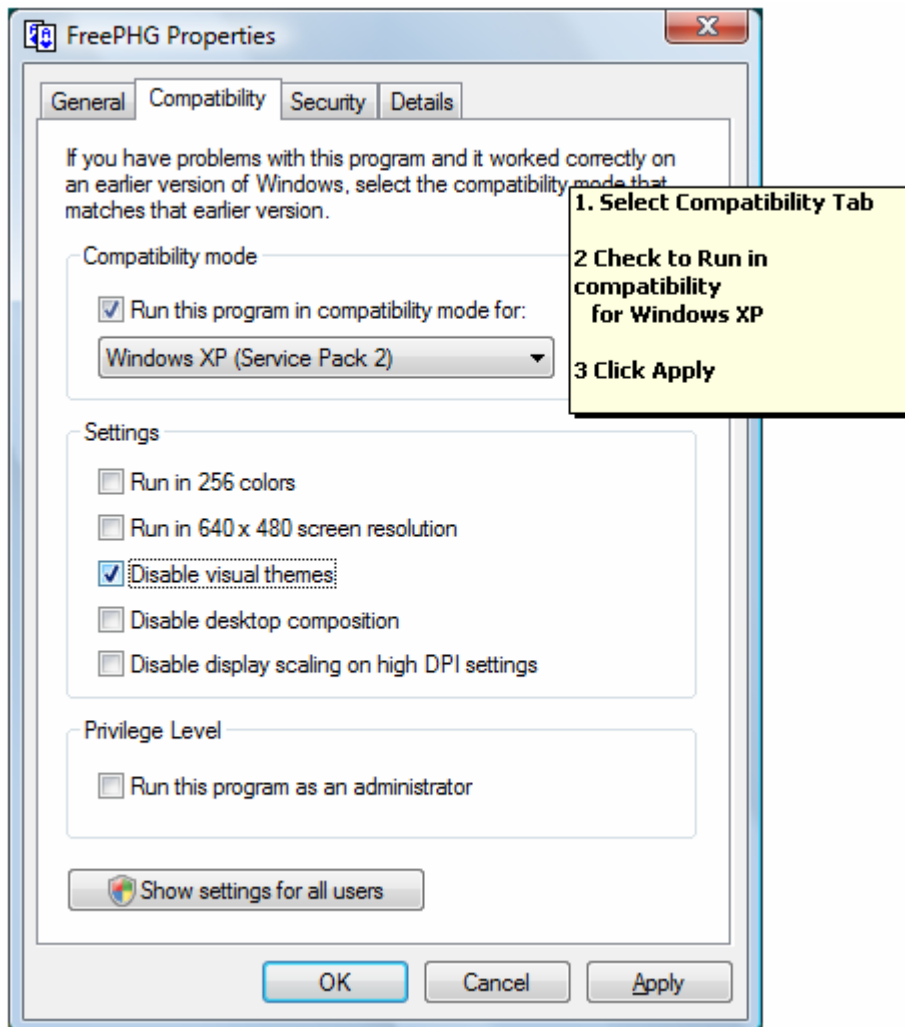
Get FPHG from this link: [http://www.insight-pokerhound.com/FreePHG\\_Install.exe](http://www.insight-pokerhound.com/FreePHG_Install.exe)

### To Install FPHG

1. Download Installer to your desktop
2. Run the installer
3. Follow instructions at each of the screens, and click Next
4. Click Exit at final screen

### Set FPHG to Run in XP Emulation mode

1. Go to FPHG Install location ( by default: C:\Program Files\FreePHG)
2. Right click on FreePHG.exe and select Properties

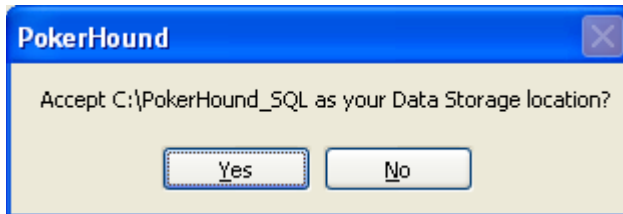


## First Time Start of PokerHound

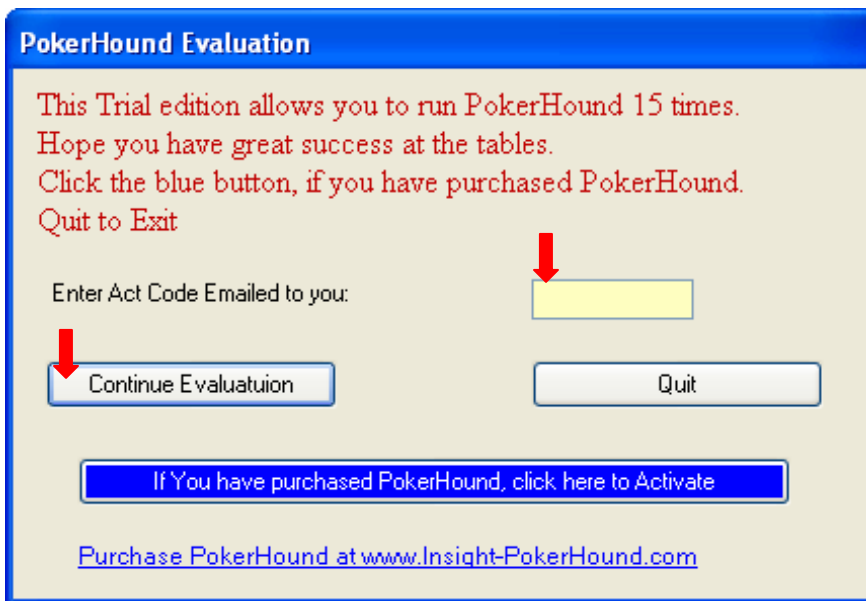
PokerHound must be Run as an administrator at least once so that it can create and attach the SQL Express database files.

It is best to set PokerHound to always run as Administrator. See demo:  
[http://www.insight-pokerhound.com/How\\_To\\_Run\\_As\\_Admin.html](http://www.insight-pokerhound.com/How_To_Run_As_Admin.html)

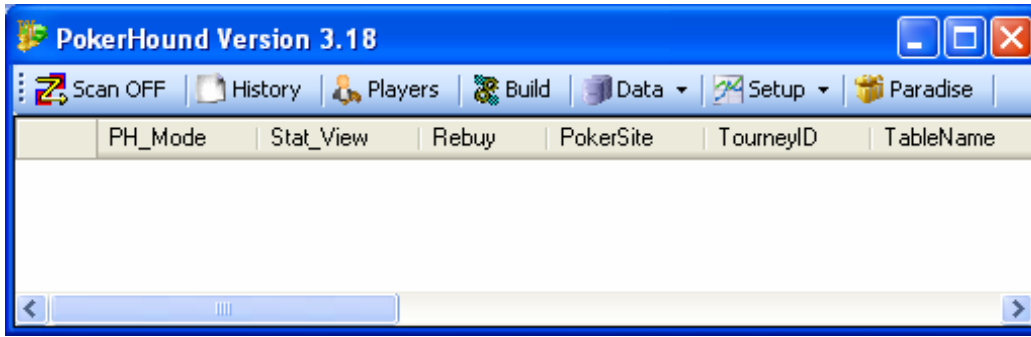
After PokerHound starts, you will be asked to set your data storage location. Once data storage location is set, PokerHound can be started normally on subsequent startups.



Enter your Act Code into the Evaluation screen. (This only needs to be done once, at initial Startup) and click "Continue Evaluation"



PokerHound Main form will then enable



See Active demo at <http://www.insight-pokerhound.com> for explanation of each control

## Set PokerHound Options

1. From PokerHound main form, click Setup → Options

**Set Windows Version to Vista**

Options

Save Cancel

Windows Version: Vista-32

Screen Names

Full Tilt:  or

Poker Stars:

Party/Empire

Score and Style

Min. Hands to Auto-Calc Score:

Auto-Calc Frequency:

Min. Post Flop Actions to Segregate Aggr. Factor:

Data Control

Delete on close players with less than x hands:

Limit History View to Games in last x days:

Delete Table/Hand data for Games older than x days:

Player Stat. Sort

Sort Pocket Analysis on Action then Position :

Sort Flop, Turn, River Analysis on Action then Position :

Program Control

Table Stats View on Start Scan:

When Owner Detected at new table switch mode to:

Change Control to Green when activated :

Calculate Flop, Turn, River probabilities in +EV HUD :

Always Open External Stat in Style Tab :

Auto Switch SitAndGo to Short Game Stats :

Auto Switch MTT to Short Game Stats :

Hide Non-Critical Messages :

Hide All Game Table Messages :

Disable Move of Hand Histories to Processed :

Minimum Actuals to exclude pattern data:

Minimum Acceptable Pattern Sample Size:

Minimum # Hands for Player Hand Strength calculation :

Min # Players with score to build game Pattern:

ICM Range Threshold:

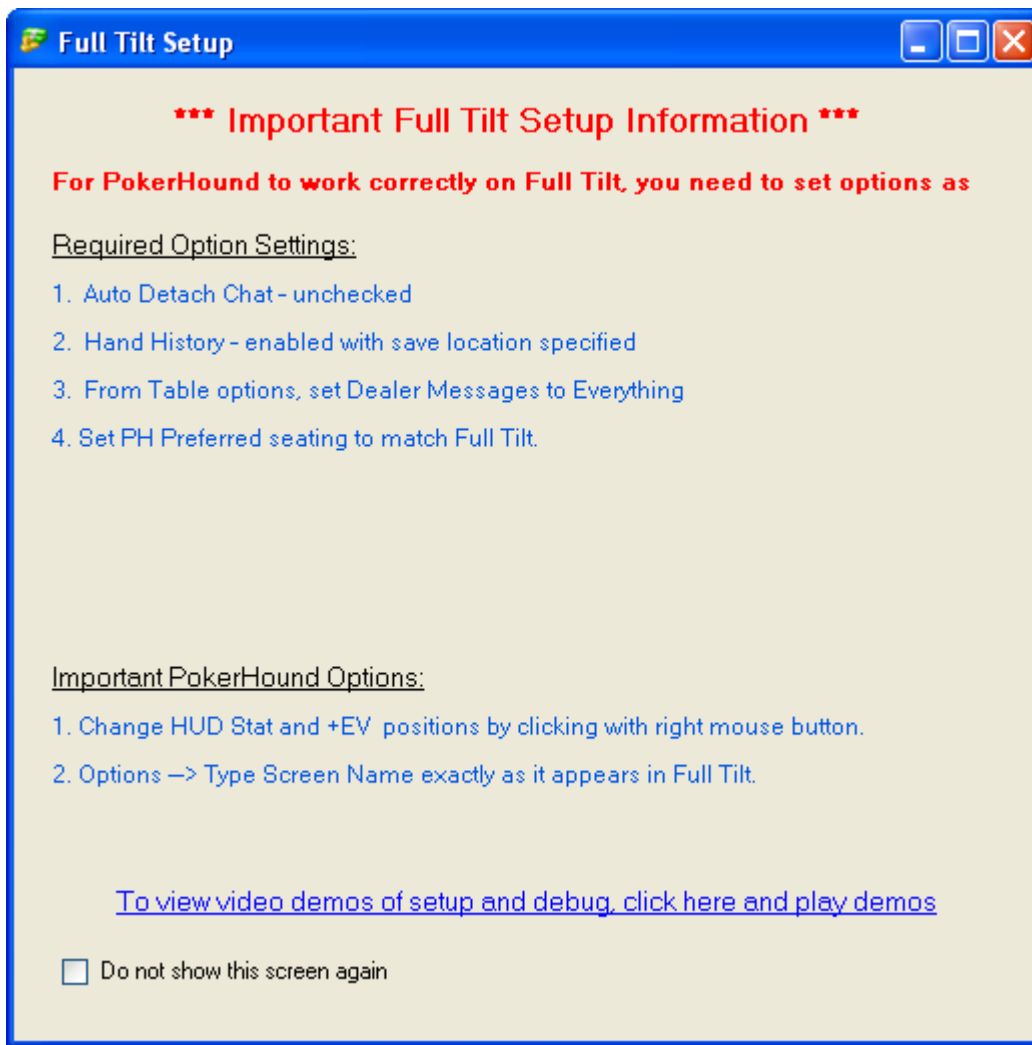
Continuation Bet Track Range Low / High:  /

**Enter your player Names, exactly as they appear on the Poker Site**

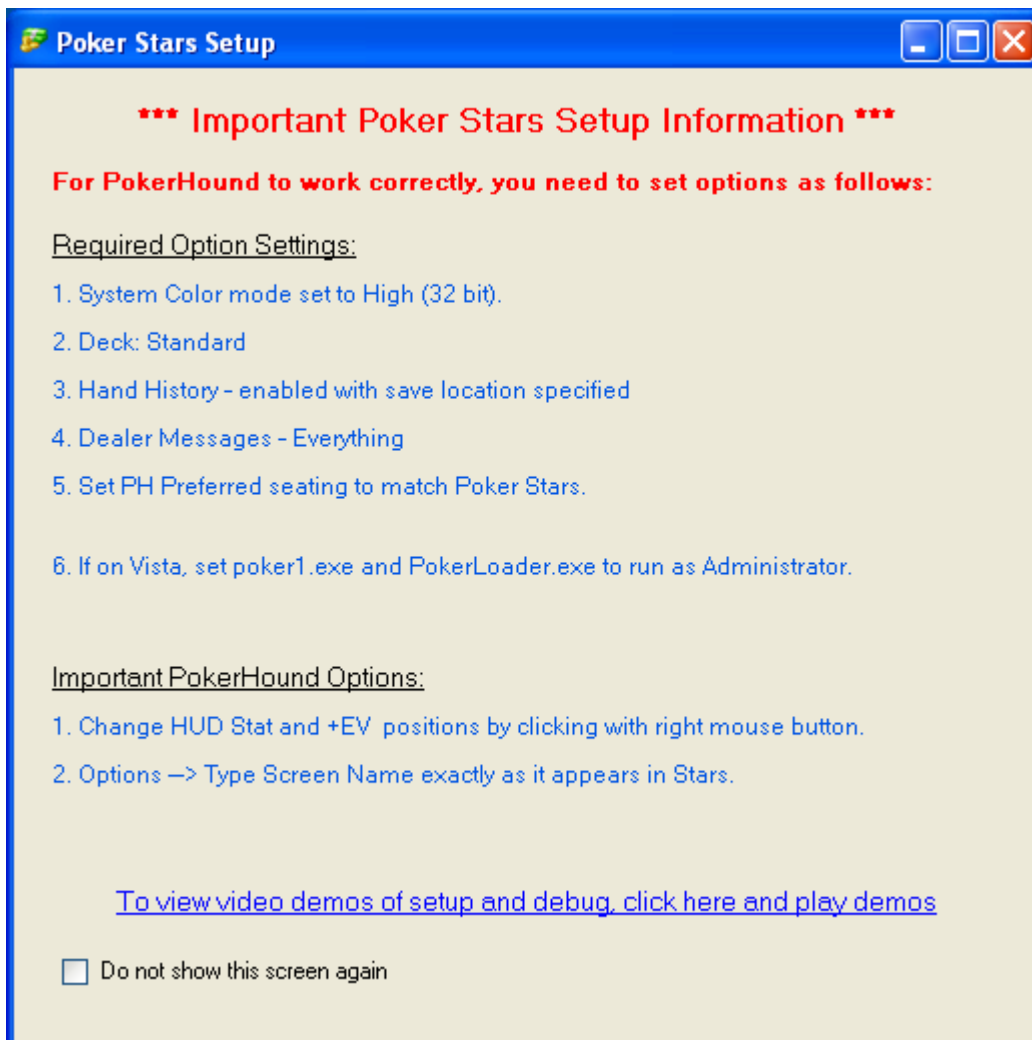
**Set Program Control Options as shown. Later when more familiar with PH, adjust these options as desired.**

## Set Poker Site Options

Full Tilt:



Poker Stars:



Review other Video demos to ensure smooth operation

<http://www.insight-pokerhound.com/Demos.htm>